

Follow label instructions
to help apply
pesticides safely!



We'll help you find assistance with:

- emergency treatment for humans and animals
- pesticide clean-up and disposal
- laboratory analyses
- pesticide incident investigation

NPIC provides pesticide information to:

- general public
- health care providers, physicians, veterinarians
- local, state, and federal agencies, including school districts

visit us online:
npic.orst.edu

You've Got Questions? We've Got Answers!

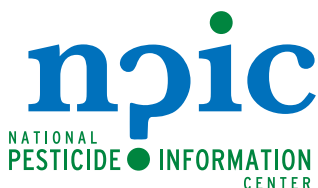


call toll-free

1.800.858.7378

8:00 am to 12:00 pm PT
Monday - Friday

Or visit us anytime on the web at
npic.orst.edu



OREGON STATE UNIVERSITY

310 Weniger Hall
Corvallis, OR 97331-6502

1.800.858.7378
npic.orst.edu
npic@ace.orst.edu



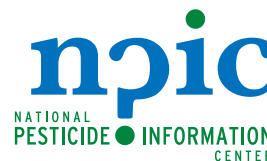
NPIC is a cooperative agreement (#X8-83458501) between Oregon State University and the United States Environmental Protection Agency.

Pesticide Questions? We've Got Answers!

Bug Sprays...
Weed Killers...
Disinfectants...
and more!



Are you pregnant and
wondering about using
a pesticide inside your home?



Do you have questions
about using insect
repellents on your children?



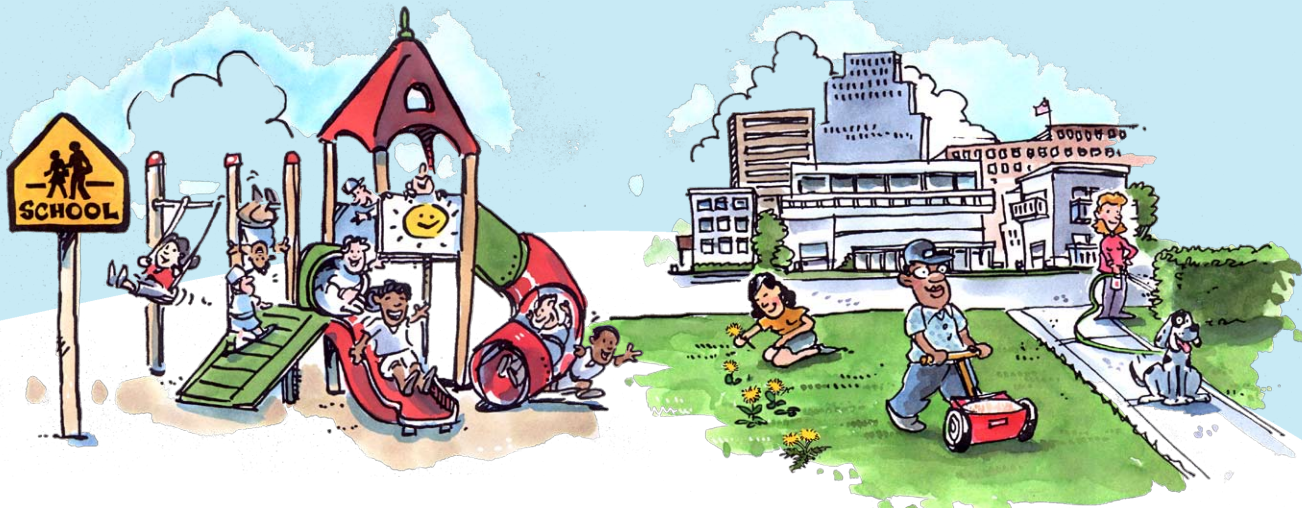
call toll-free
1.800.858.7378



Friendly Pesticide Specialists can help you:

- understand the technical/chemical information on the labels
- evaluate toxicity and risks
- explore possible alternatives
- get some tips on reducing risk
- identify the signs of pesticide poisoning
- obtain general information on pesticide regulations

Read the label first!



Be smart about pesticides!

Got Questions?

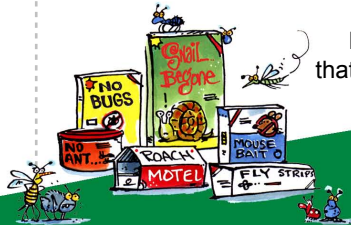
Is your neighbor using pesticides, and you're wondering about your risk?



Do you have questions about the pesticides used to control mosquitoes and ticks in your community?

After a termite control treatment, do you wonder when to return?

Did you know that baits are pesticides?



Get Answers!

Whether you're in the city or the countryside...

Whether you're combating weeds or bed bugs...

Whether you're a homeowner, a renter, or a pesticide applicator...

Get objective, science-based chemical, health, and environmental information about pesticides.

How long should you keep pets off a treated lawn?



Call the National Pesticide Information Center at: **1.800.858.7378**